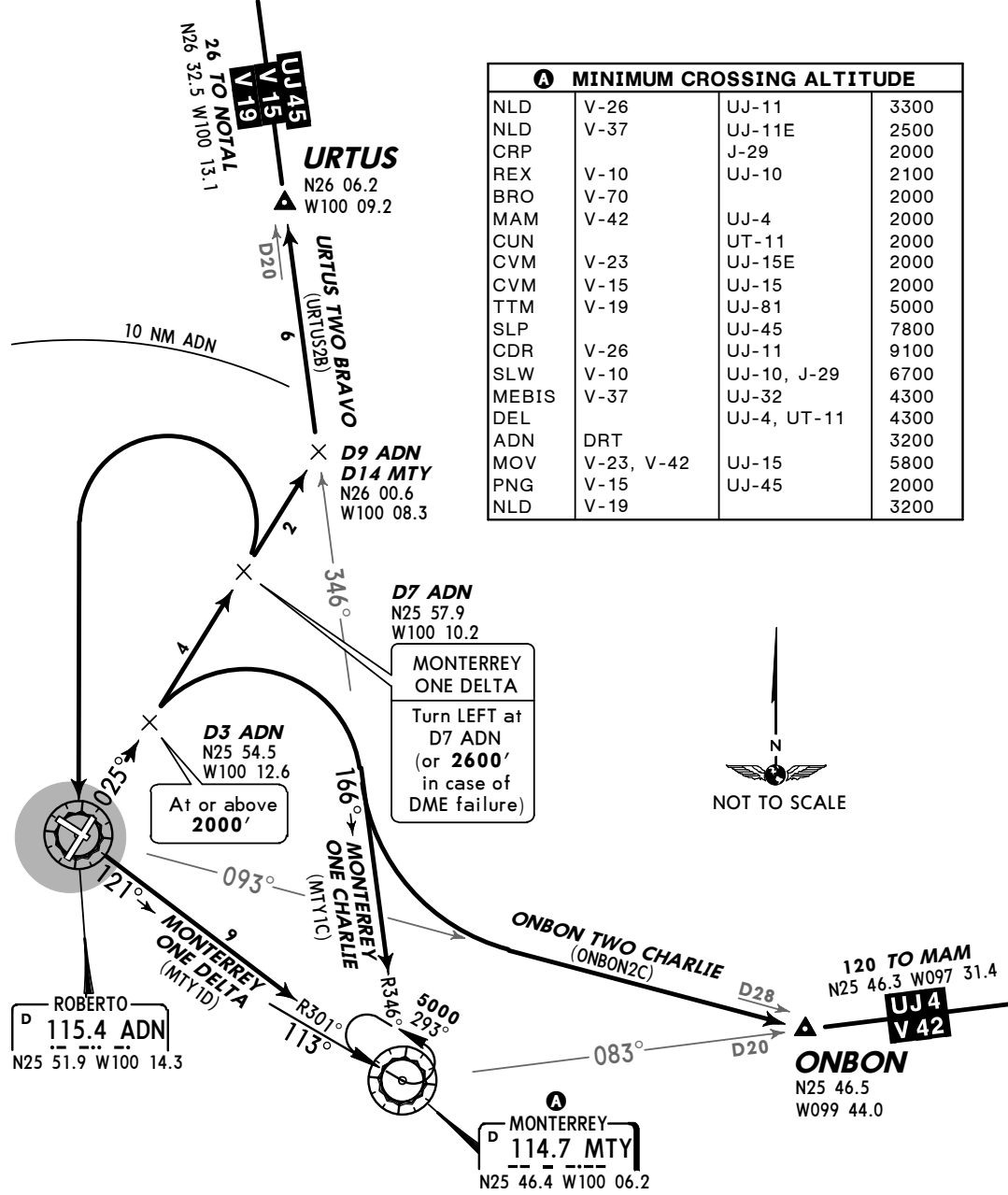


Airport Information

Details for DEL NORTE INTL	
City	MONTERREY
State/Province	
Country	MEX
Latitude	N 25° 51' 56.18"
Longitude	W 100° 14' 13.96"
Elevation	1476
Longest Runway	6500
Magnetic Variance	E 7.0°
Fuel Type	100-130 octane fuel is available JET A-1 fuel is available
Oxygen	Oxygen facilities are unavailable.
Repair Facility	Minor airframe repairs are available. Minor engine repairs are available.
Landing Fee	Unknown.
Jet Start Unit	A starting unit is not available at the airport.
Precision Approach	Availability is Unknown.
Beacon Light	A beacon light is available.
Customs Facilities	Customs are available without restriction
Usage Type	Airport/Heliport is open to the public.
Time Zone Conversion	+6:00=UTC
Daylight Savings	Airport observes daylight savings time
Change Notices Available	none

MONTERREY Departure (R) 119.75	Apt Elev 1476'	Trans level: FL195 Trans alt: 18500'
--------------------------------------	-------------------	---

DEPARTURES RWY 02
 MONTERREY ONE CHARLIE (MTY1C) [MTY1C],
 MONTERREY ONE DELTA (MTY1D) [MTY1D],
 ONBON TWO CHARLIE (ONBON2C) [ONBO2C],
 URTUS TWO BRAVO (URTUS2B) [URTU2B]

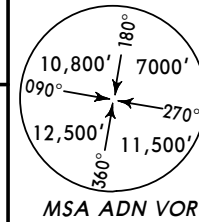


SID	INITIAL CLIMB
MONTERREY ONE CHARLIE	Climb on ADN R-025 to D3 ADN, turn RIGHT and intercept MTY R-346 to MTY. Depart MTY at the MCA A for the assigned route or in accordance with ATC instructions.
MONTERREY ONE DELTA	Climb on ADN R-025 to D7 ADN (or 2600' in case of DME failure), then turn LEFT within 10 NM to ADN and intercept MTY R-301 to MTY. Depart MTY at the MCA A for the assigned route or in accordance with ATC instructions.
ONBON TWO CHARLIE	Climb on ADN R-025 to D3 ADN, then turn RIGHT and intercept ADN R-093 to ONBON, then continue on assigned route or in accordance with ATC instructions.
URTUS TWO BRAVO	Climb on ADN R-025 to D9 ADN, then turn LEFT and intercept MTY R-346 to URTUS, then continue on assigned route or in accordance with ATC instructions.

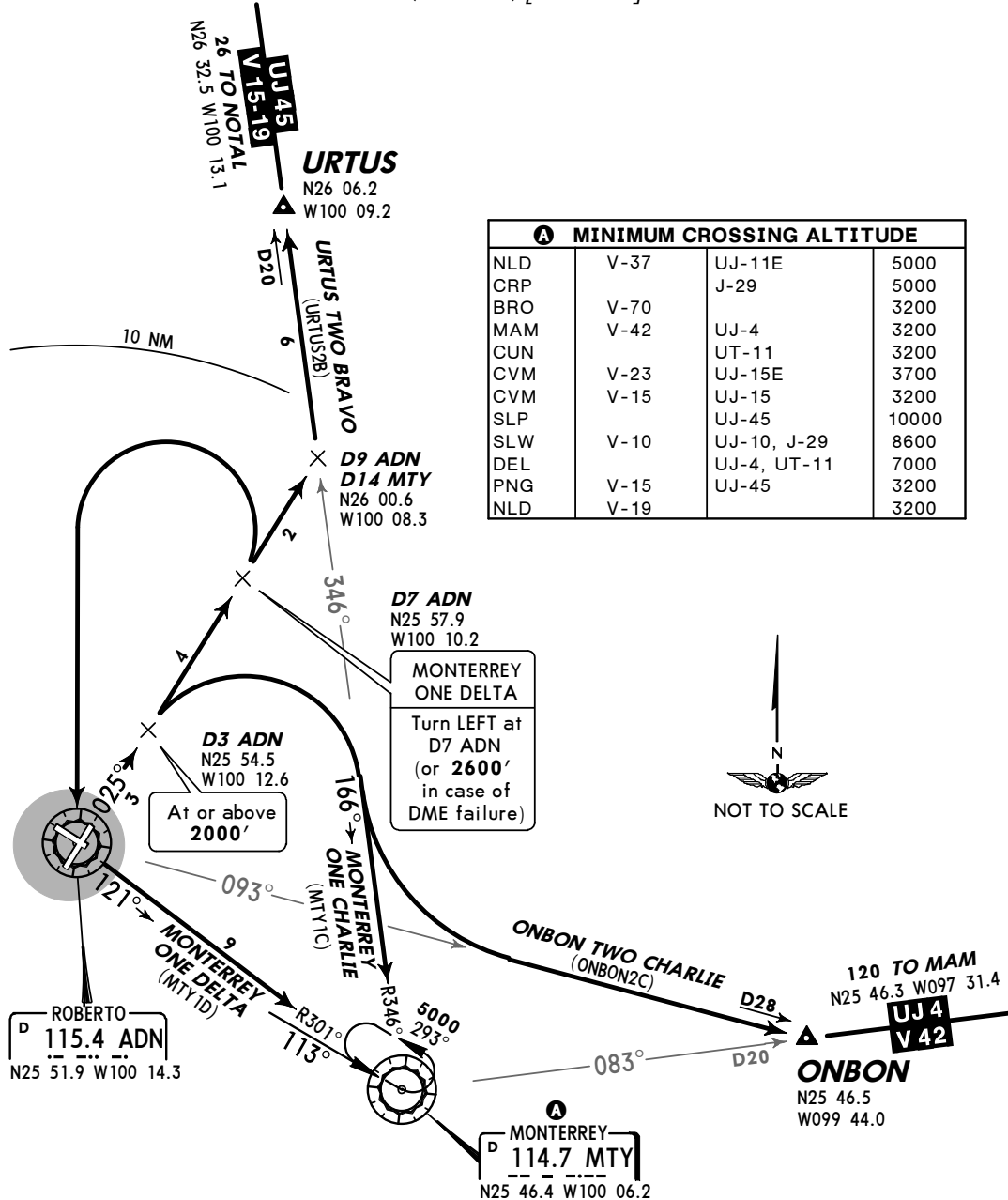
MONTERREY
Departure (R)
119.75

Apt Elev
1476'

Trans level: FL 195 Trans alt: 18500'



DEPARTURES RWY 02
MONTERREY ONE CHARLIE (MTY1C) [MTY1C],
MONTERREY ONE DELTA (MTY1D) [MTY1D],
ONBON TWO CHARLIE (ONBON2C) [ONBO2C],
URTUS TWO BRAVO (URTUS2B) [URTU2B]

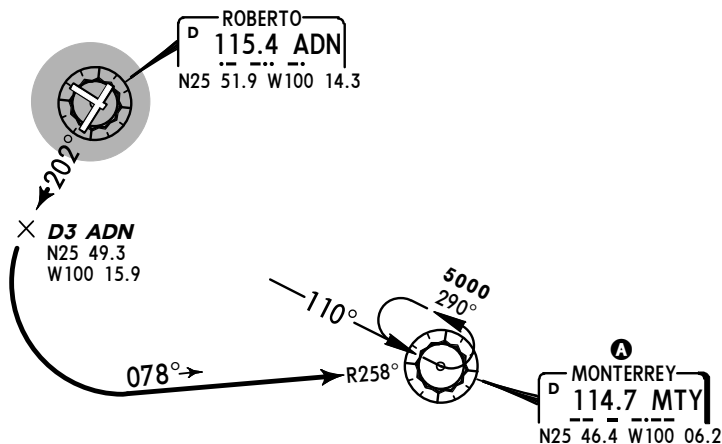


SID	INITIAL CLIMB
MONTERREY ONE CHARLIE	Climb on ADN R-025 to D3 ADN, turn RIGHT and intercept MTY R-346 to MTY. Depart MTY at the MCA A for the assigned route or in accordance with ATC instructions.
MONTERREY ONE DELTA	Climb on ADN R-025 to D7 ADN (or 2600' in case of DME failure), then turn LEFT within 10 NM to ADN and intercept MTY R-301 to MTY. Depart MTY at the MCA A for the assigned route or in accordance with ATC instructions.
ONBON TWO CHARLIE	Climb on ADN R-025 to D3 ADN, then turn RIGHT and intercept ADN R-093 to ONBON, then continue on assigned route or in accordance with ATC instructions.
URTUS TWO BRAVO	Climb on ADN R-025 to D9 ADN, then turn LEFT and intercept MTY R-346 to URTUS, then continue on assigned route or in accordance with ATC instructions.

MONTERREY
Departure (R)
119.75 *Apt Elev*
1476'

Trans level: FL195 Trans alt: 18500'

DEPARTURE RWY 20
MONTERREY ONE ECHO (MTY1E)



A MINIMUM CROSSING ALTITUDE			
NLD	V-26	UJ-11	3300
NLD	V-37	UJ-11E	2500
CRP		J-29	2000
REX	V-10	UJ-10	2100
BRO	V-70		2000
MAM	V-42	UJ-4	2000
CUN		UT-11	2000
CVM	V-23	UJ-15E	2000
CVM	V-15	UJ-15	2000
TTM	V-19	UJ-81	5000
SLP		UJ-45	7800
CDR	V-26	UJ-11	9100
SLW	V-10	UJ-10, J-29	6700
MEBIS	V-37	UJ-32	4300
DEL		UJ-4, UT-11	4300
ADN	DRT		3200
MOV	V-23, V-42	UJ-15	5800
PNG	V-15	UJ-45	2000
NLD	V-19		3200

This SID requires a minimum climb gradient of 470' per NM to 4000'.

Gnd speed-KT	75	100	150	200	250	300
470' per NM	588	783	1175	1567	1958	2350

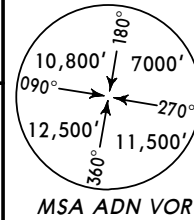
INITIAL CLIMB

Climb on ADN R-202 to D3 ADN, then turn LEFT and proceed on MTY R-258 to MTY. Depart MTY at the MCA **A** for the assigned route or in accordance with ATC instructions.

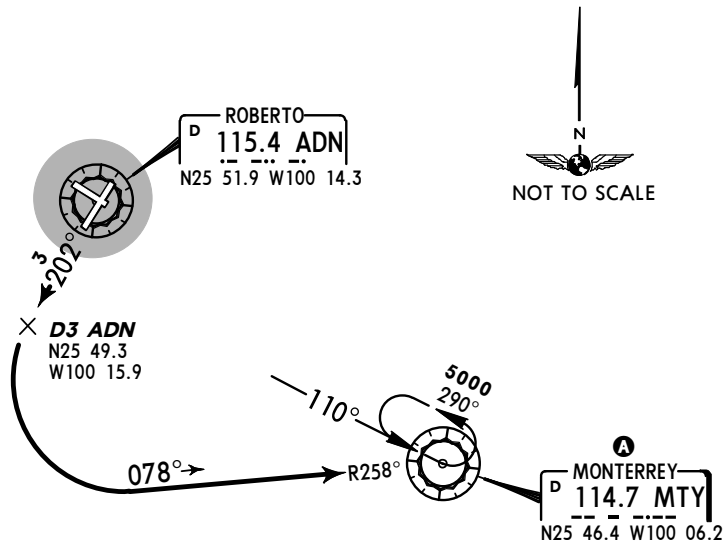
MONTERREY
Departure (R)
119.75

Apt Elev
1476'

Trans level: FL 195 Trans alt: 18500'



DEPARTURE RWY 20
MONTERREY ONE ECHO (MTY1E)



A MINIMUM CROSSING ALTITUDE			
NLD	V-37	UJ-11E	5000
CRP		J-29	5000
BRO	V-70		3200
MAM	V-42	UJ-4	3200
CUN		UT-11	3200
CVM	V-23	UJ-15E	3700
CVM	V-15	UJ-15	3200
SLP		UJ-45	10000
SLW	V-10	UJ-10, J-29	8600
DEL		UJ-4, UT-11	7000
PNG	V-15	UJ-45	3200
NLD	V-19		3200

This SID requires a minimum climb gradient of 470' per NM to **4000'**.

Gnd speed-KT	75	100	150	200	250	300
470' per NM	588	783	1175	1567	1958	2350

INITIAL CLIMB

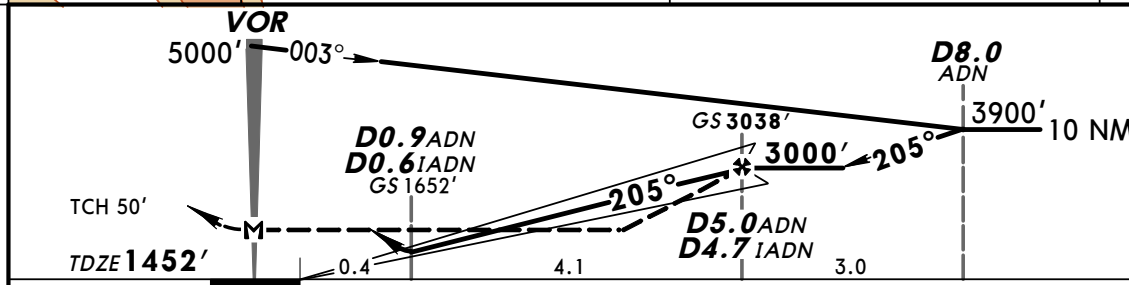
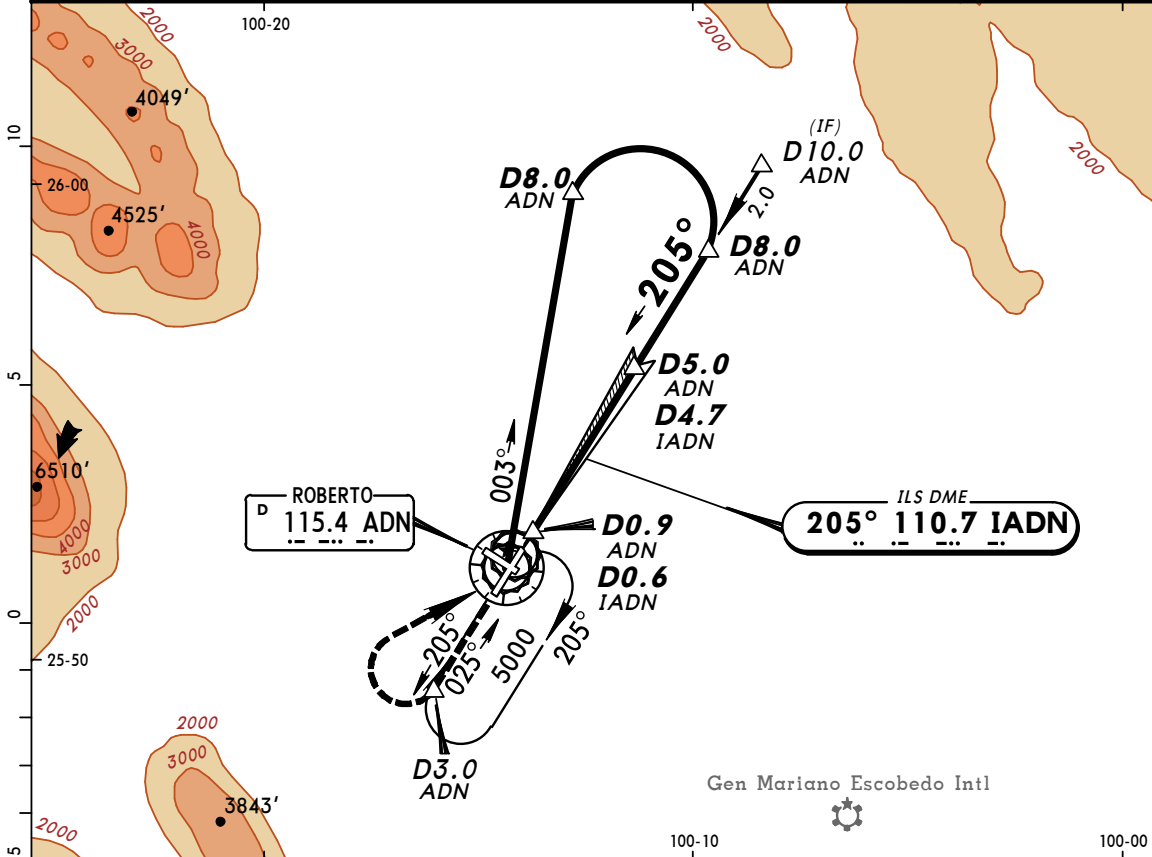
Climb on ADN R-202 to D3 ADN, then turn LEFT and proceed on MTY R-258 to MTY. Depart MTY at the MCA **A** for the assigned route or in accordance with ATC instructions.

MMAN/NTR
DEL NORTE INTL

JEPPESEN
21 JUN 13
Eff 27 Jun (21-1)

MONTERREY, MEXICO
ILS DME 1 or LOC Rwy 20

*ATIS 127.55	MONTERREY Approach (R) 119.75 120.4		*DEL NORTE Tower 118.6	*Ground 122.0
LOC IADN 110.7	Final Apch Crs 205°	GS D5.0 ADN D4.7 IADN 3038' (1586')	ILS DA(H) 1652' (200')	Apt Elev 1476' TDZE 1452'
MISSED APCH: Climb on ADN VOR R-205 to D3.0 ADN, turn RIGHT within 5 NM to ADN VOR, continue on ADN VOR R-003 to D8.0 ADN, turn RIGHT within 10 NM to ADN VOR to the minimum holding altitude.				
Alt Set: MB (IN on req)		TDZ Elev: 52 MB	Trans level: FL 195	Trans alt: 18500'
				MSA ADN VOR



Gnd speed-Kts	70	90	100	120	140	160				
Gs	3.20°	396	510	566	679	793	906			
MAP at VOR										
STRAIGHT-IN LANDING RWY20						CIRCLE-TO-LAND				
ILS DA(H) 1652' (200')			LOC (GS out) MDA(H) 1980' (528')			Max Kts				
A			1			90				
B			1			2040'(564')-1				
C			1½			140				
D			1½			2040'(564')-1½				
ALL Non Skd			1¾			165				
DA(H) 1702' (250')-1										

CHANGES: D10.0 waypoint.

© JEPPESEN, 2008, 2013. ALL RIGHTS RESERVED.

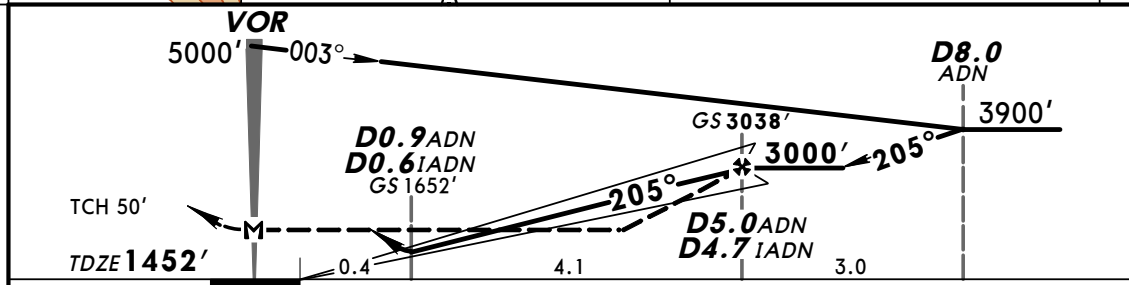
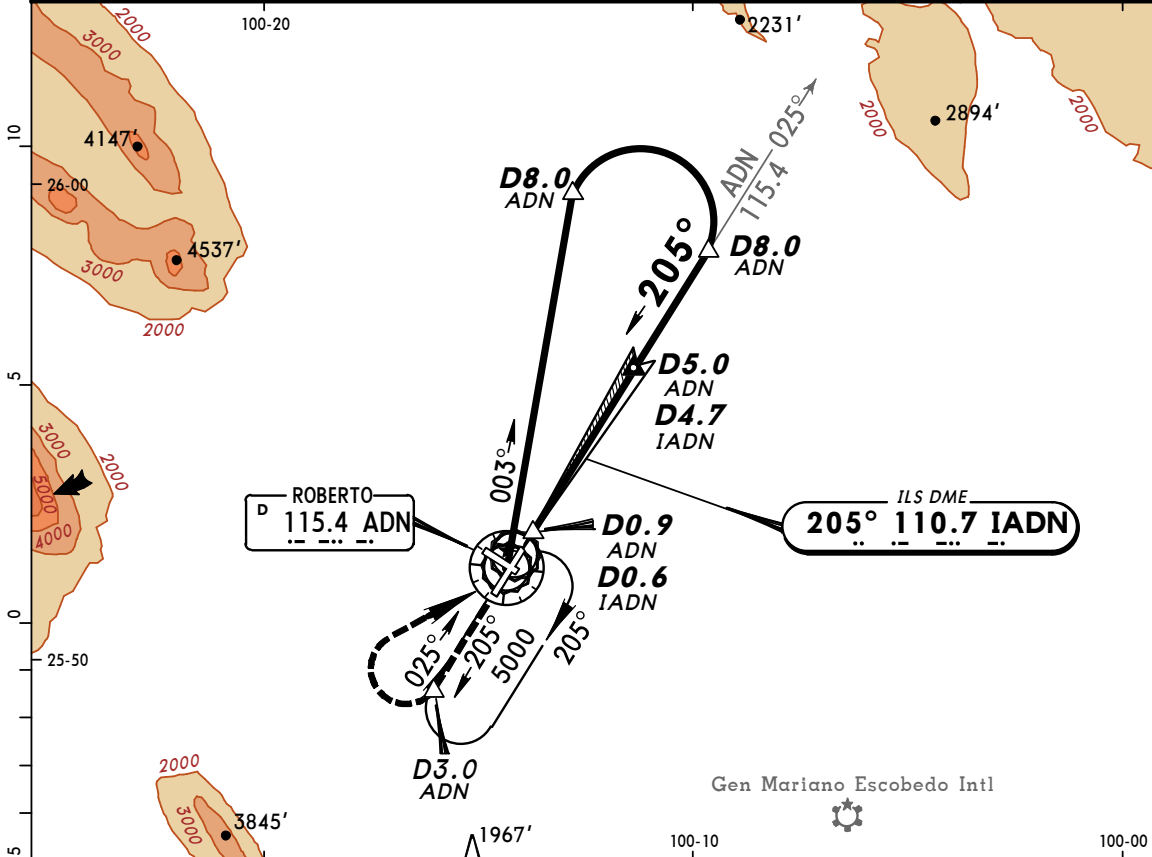
Print Date: 26 Jun 2013

MMAN/NTR
DEL NORTE INTL

JEPPESEN
28 SEP 12 (21-1)

MONTERREY, MEXICO
ILS DME 1 or LOC Rwy 20

*ATIS 127.55		MONTERREY Approach (R) 119.75 120.4		*DEL NORTE Tower 118.6	*Ground 122.0
LOC IADN 110.7	Final Apch Crs 205°	GS D5.0 ADN D4.7 IADN 3038' (1586')	ILS DA(H) 1652' (200')	Apt Elev 1476'	TDZE 1452'
MISSED APCH: Climb on ADN VOR R-205 to D3.0 ADN, turn RIGHT within 5 NM to ADN VOR, continue on ADN VOR R-003 to D8.0 ADN, turn RIGHT within 10 NM to ADN VOR to the minimum holding altitude.					
Alt Set: MB (IN on req)		TDZ Elev: 52 MB	Trans level: FL 195	Trans alt: 18500'	MSA ADN VOR



Gnd speed-Kts	70	90	100	120	140	160	PAPI-L	↑ on 115.4 ADN R-205	D3.0 ADN
Gs	3.20	396	510	566	679	793			
MAP at VOR									

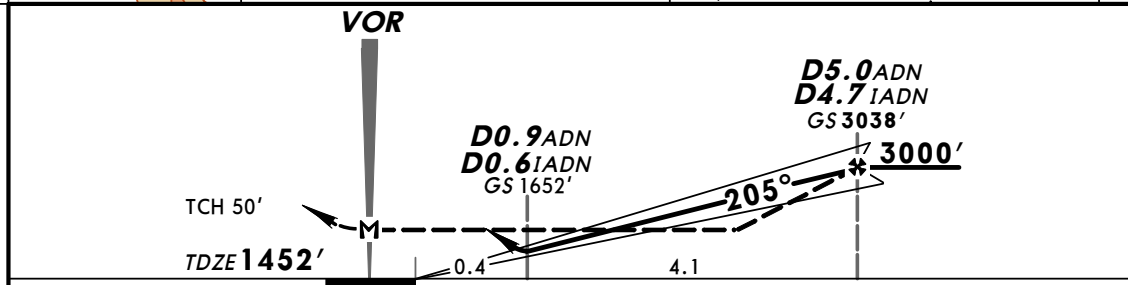
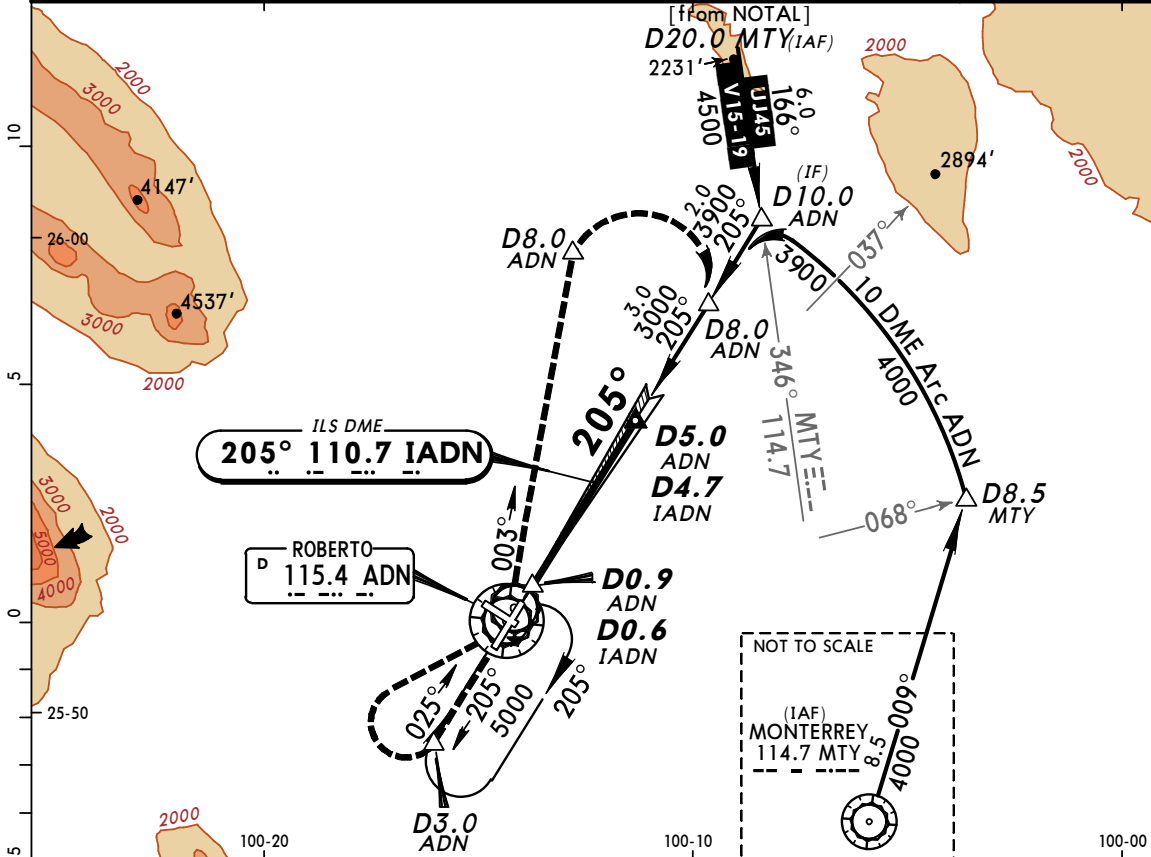
STRAIGHT-IN LANDING RWY20			CIRCLE-TO-LAND		
ILS		LOC (GS out)		Max Kts	MDA(H)
DA(H)	1652' (200')	MDA(H)	1980' (528')		
A				90	2040' (564')-1
B			1	120	2040' (564')-1
C	3/4		1 1/2	140	2040' (564')-1 1/2
D				165	2040' (564')-2
ALL Non Skd	DA(H) 1702' (250')-1		1 3/4		

CHANGES: Communications.

© JEPPESEN, 2008, 2012. ALL RIGHTS RESERVED.

Print Date: 26 Jun 2013

*ATIS 127.55		MONTERREY Approach (R) 119.75 120.4		*DEL NORTE Tower 118.6		*Ground 122.0	
LOC IADN 110.7	Final Apch Crs 205°	GS D5.0 ADN D4.7 IADN 3038' (1586')	ILS DA(H) 1652' (200')	Apt Elev 1476' TDZE 1452'			
MISSED APCH: Climb on ADN VOR R-205 to D3.0 ADN, turn RIGHT within 5 NM to ADN VOR, continue on ADN VOR R-003 to D8.0 ADN, turn RIGHT within 10 NM to ADN VOR to the minimum holding altitude.							
Alt Set: MB (IN on req)		TDZ Elev: 52 MB		Trans level: FL 195		Trans alt: 18500'	



Gnd speed-Kts	70	90	100	120	140	160				
GS	3.20°	401	516	574	688	803	918			
MAP at VOR										

STRAIGHT-IN LANDING RWY20				CIRCLE-TO-LAND			
ILS DA(H) 1652' (200')		LOC (GS out) MDA(H) 1980' (528')		PAPI-L		ADN on 115.4 R-205	
A				Max Kts			
B			1	90			D3.0 ADN
C	3/4			120			2040'(564')-1
D			1 1/2	140			2040'(564')-1 1/2
ALL Non Skd	DA(H) 1702' (250')-1		1 3/4	165			2040'(564')-2

MMAN/NTR
DEL NORTE INTL

JEPPESEN

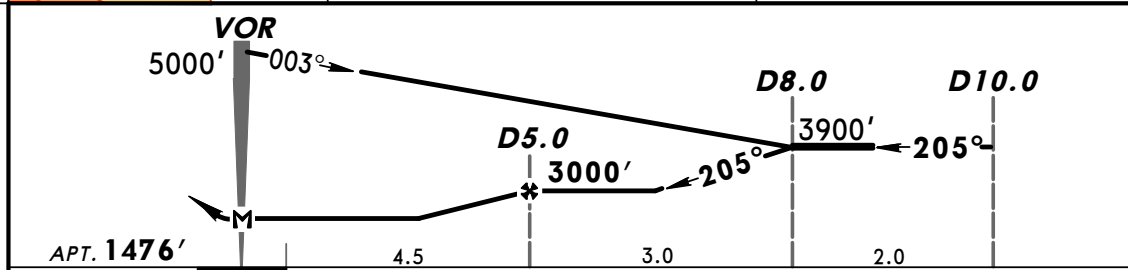
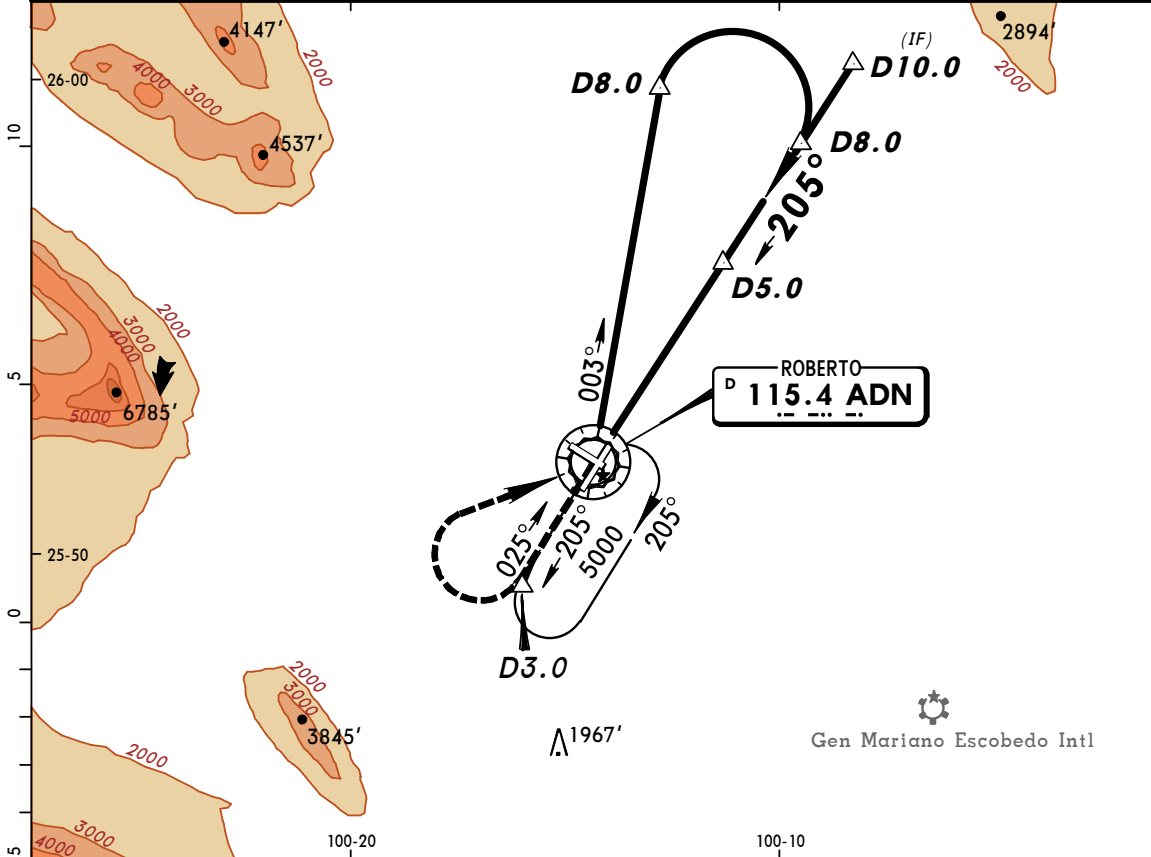
4 FEB 11

(23-1)

Eff 10 Feb

MONTERREY, MEXICO
VOR DME 1 Rwy 20

*ATIS 127.55		MONTERREY Approach (R) 119.75 120.4		*DEL NORTE Tower 118.6
VOR ADN 115.4	Final Apch Crs 205°	Minimum Alt D5.0 3000' (1524')	MDA(H) 1980' (504')	Apt Elev 1476'
MISSED APCH: Climb on ADN VOR R-205 outbound to D3.0, turn RIGHT within 5 NM to ADN VOR, continue on ADN VOR R-003 to D8.0, turn RIGHT within 10 NM to ADN VOR to the minimum holding altitude.				
Alt Set: MB (IN on req)		Apt Elev: 53 MB	Trans level: FL 195	Trans alt: 18500'
				MSA ADN VOR



MAP at VOR				PAPI-L	ADN on 115.4	D3.0
STRAIGHT-IN LANDING RWY 20				CIRCLE-TO-LAND		
MDA(H) 1980' (504')				MDA(H)		
A	1			Max Kts	2040' (564')-1	
B	1			90	2040' (564')-1	
C	1½			120	2040' (564')-1½	
D	1½			140	2040' (564')-1½	
				165	2040' (564')-2	

CHANGES: Procedure bearings.

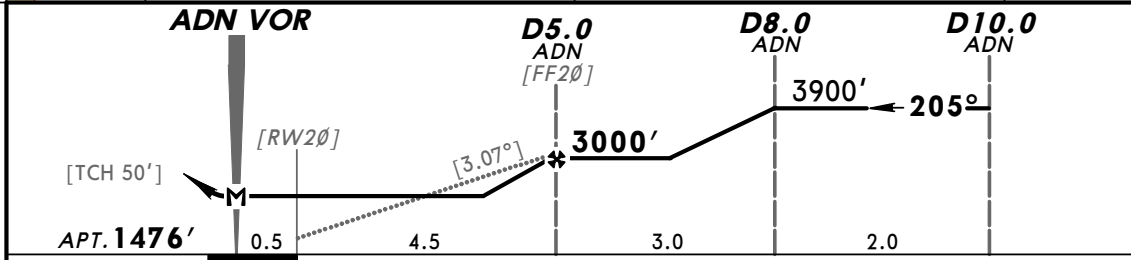
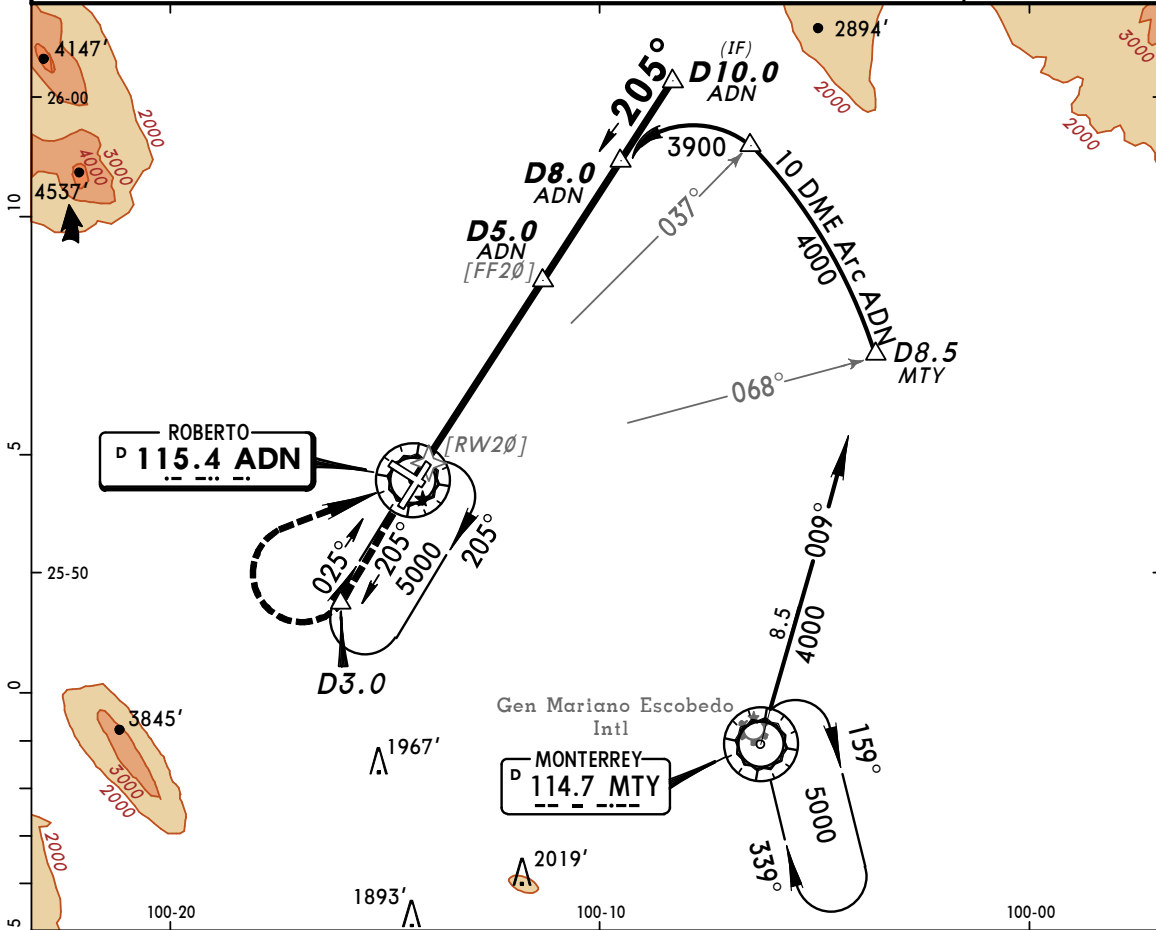
© JEPPESEN, 1999, 2011. ALL RIGHTS RESERVED.

Print Date: 26 Jun 2013

MMAN/NTR
DEL NORTE INTL

MONTERREY, MEXICO
VOR DME 2 Rwy 20

*ATIS 127.55		MONTERREY Approach (R) 119.75 120.4		*DEL NORTE Tower 118.6
VOR ADN 115.4	Final Apch Crs 205°	Minimum Alt D5.0 ADN 3000' (1524')	MDA(H) 1980' (504')	Apt Elev 1476'
MISSED APCH: Climb on ADN VOR R-205 outbound to D3.0, turn RIGHT within 5 NM to ADN VOR and follow VOR DME 1 Rwy 20.				
Alt Set: MB (IN on req) Apt Elev: 53 MB Trans level: FL 195 Trans alt: 18500' 1. In case of DME failure at any point during the procedure, maintain last altitude and proceed to the station in accordance with ATC instructions.				MSA ADN VOR

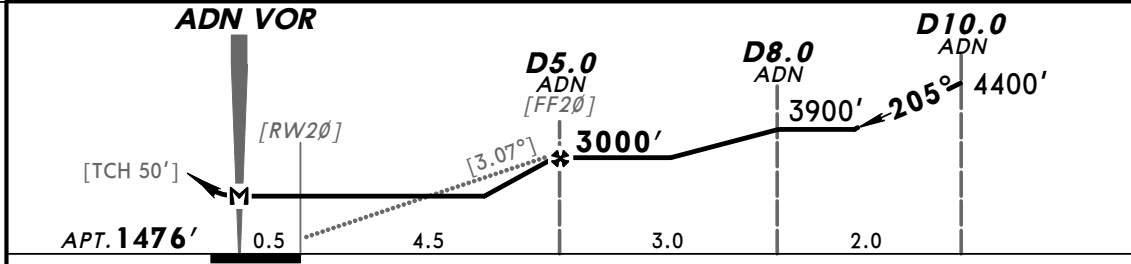
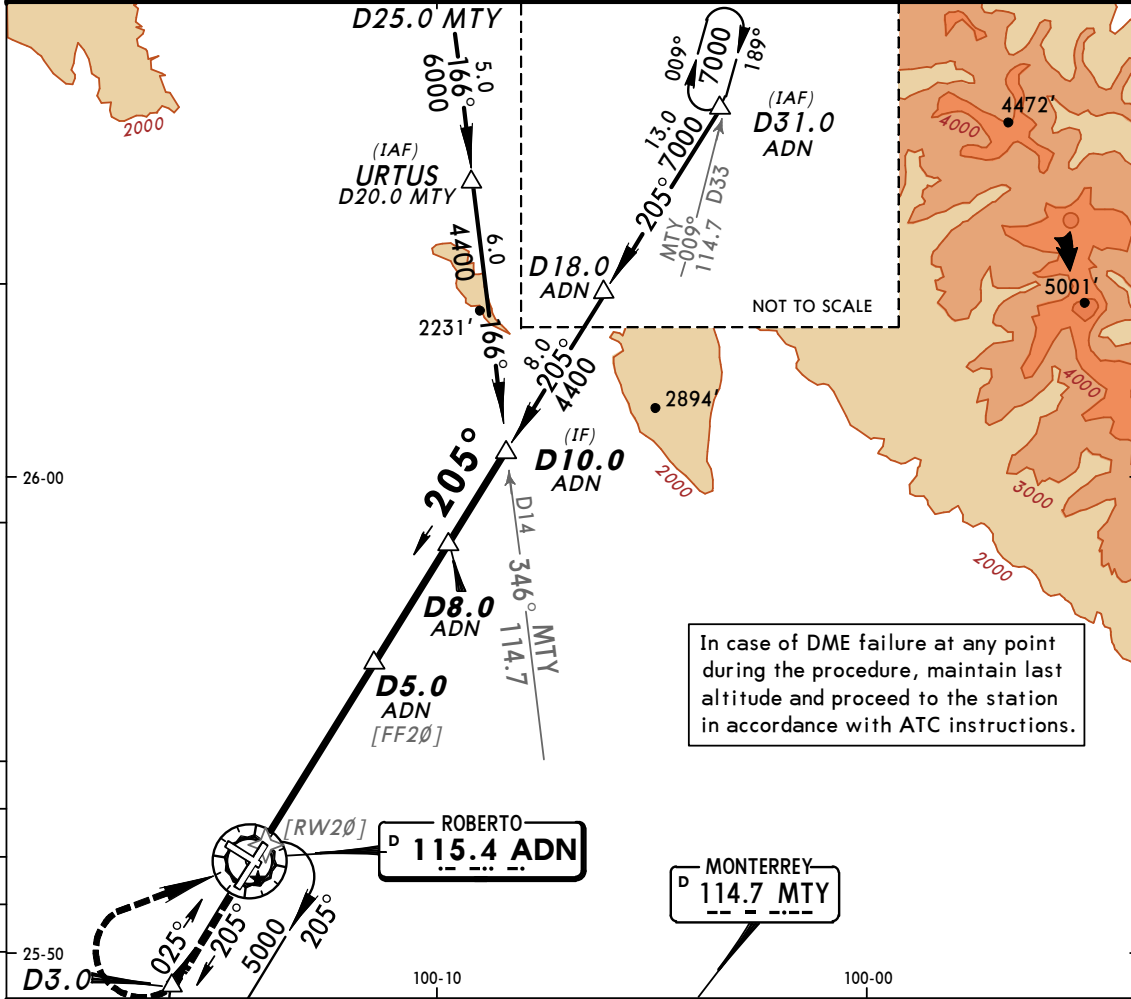
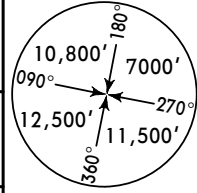


Gnd speed-Kts	70	90	100	120	140	160	PAPI-L	↑ on ADN 115.4 R-205	D3.0
Descent angle [3.07°]	380	489	543	652	760	869			
MAP at VOR									

STRAIGHT-IN LANDING RWY 20				CIRCLE-TO-LAND			
MDA(H) 1980' (504')				MDA(H)			
A	1			Max Kts			
B	1			90	2040'(564')-1		
C	1½			140	2040'(564')-1½		
D	1½			165	2040'(564')-2		

CHANGES: Missed approach, procedure bearings.

*ATIS 127.55		MONTERREY Approach (R) 119.75 120.4		*DEL NORTE Tower 118.6
VOR ADN 115.4	Final Apch Crs 205°	Minimum Alt D5.0 ADN 3000' (1524')	MDA(H) 1980' (504')	Apt Elev 1476'
MISSED APCH: Climb on ADN VOR R-205 outbound to D3.0, turn RIGHT within 5 NM to ADN VOR and follow VOR DME 1 Rwy 20.				
Alt Set: MB (IN on req)		Apt Elev: 53 MB	Trans level: FL 195	Trans alt: 18500'



Gnd speed-Kts	70	90	100	120	140	160		
Descent angle [3.07°]	380	489	543	652	760	869		
MAP at VOR								

STRAIGHT-IN LANDING RWY 20				CIRCLE-TO-LAND			
MDA(H) 1980' (504')				Max Kts			
A	1			90	2040' (564') - 1		
B	1			120	2040' (564') - 1		
C	1 1/2			140	2040' (564') - 1 1/2		
D	1 1/2			165	2040' (564') - 2		

CHANGES: Procedure bearings, URTUS intersection.

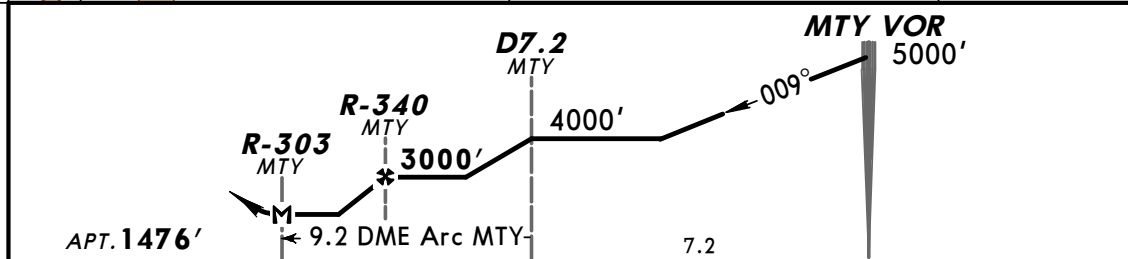
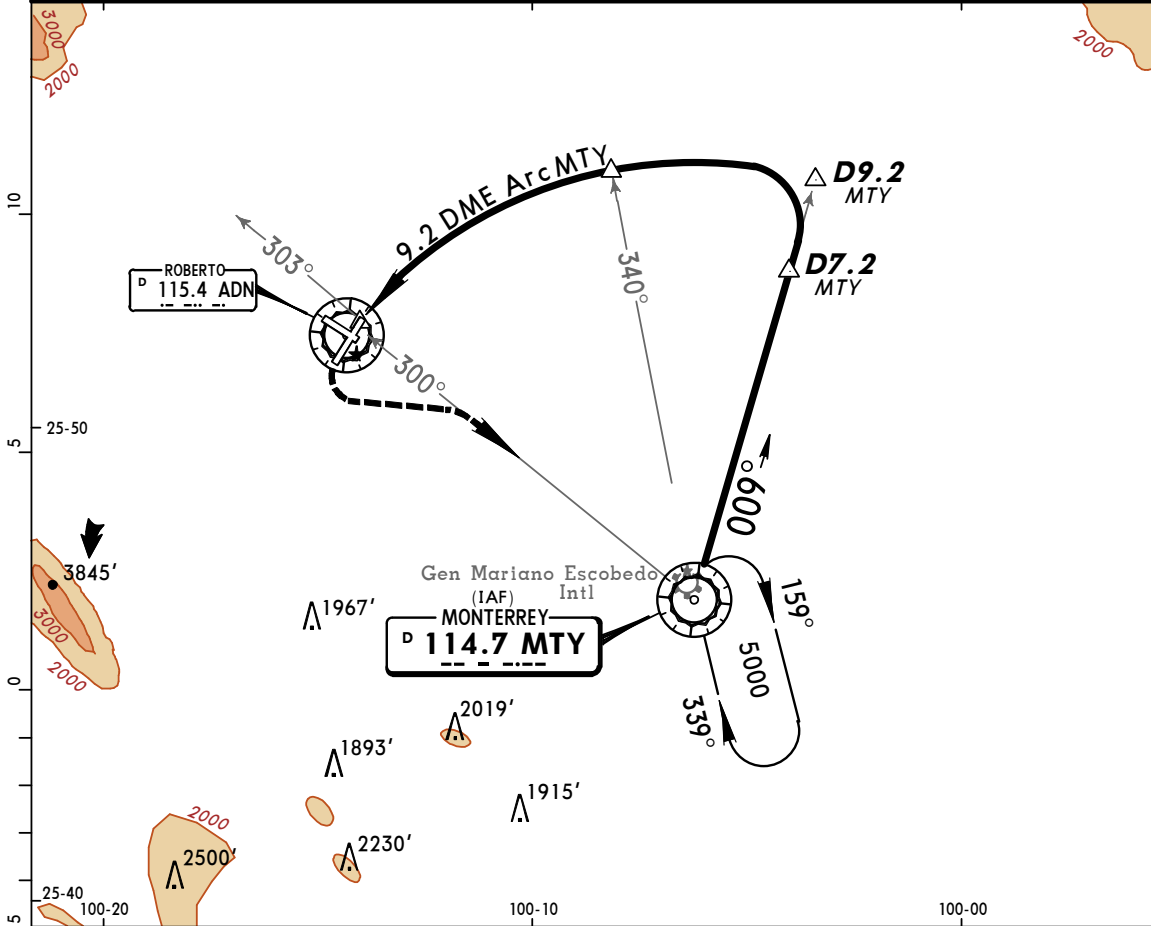
© JEPPESEN, 2003, 2011. ALL RIGHTS RESERVED.

MMAN/NTR
DEL NORTE INTL

JEPPESEN
4 FEB 11 (23-4) Eff 10 Feb

MONTERREY, MEXICO
VOR DME 4 Rwy 20

*ATIS 127.55		MONTERREY Approach (R) 119.75 120.4		*DEL NORTE Tower 118.6
VOR MTY 114.7	Final Apch Crs Refer to Planview	Minimum Alt R-340 MTY 3000' (1524')	MDA(H) 2040' (564')	Apt Elev 1476'
MISSED APCH: Climbing LEFT turn to intercept MTY VOR R-300 inbound and return to MTY VOR to the minimum holding altitude.				
Alt Set: MB (IN on req) Apt Elev: 53 MB Trans level: FL 195 Trans alt: 18500'				MSA MTY VOR



MAP at R-303 MTY				PAPI-L		MTY 114.7 R-300
------------------	--	--	--	--------	--	--

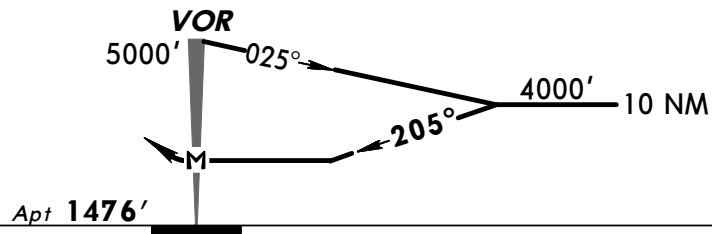
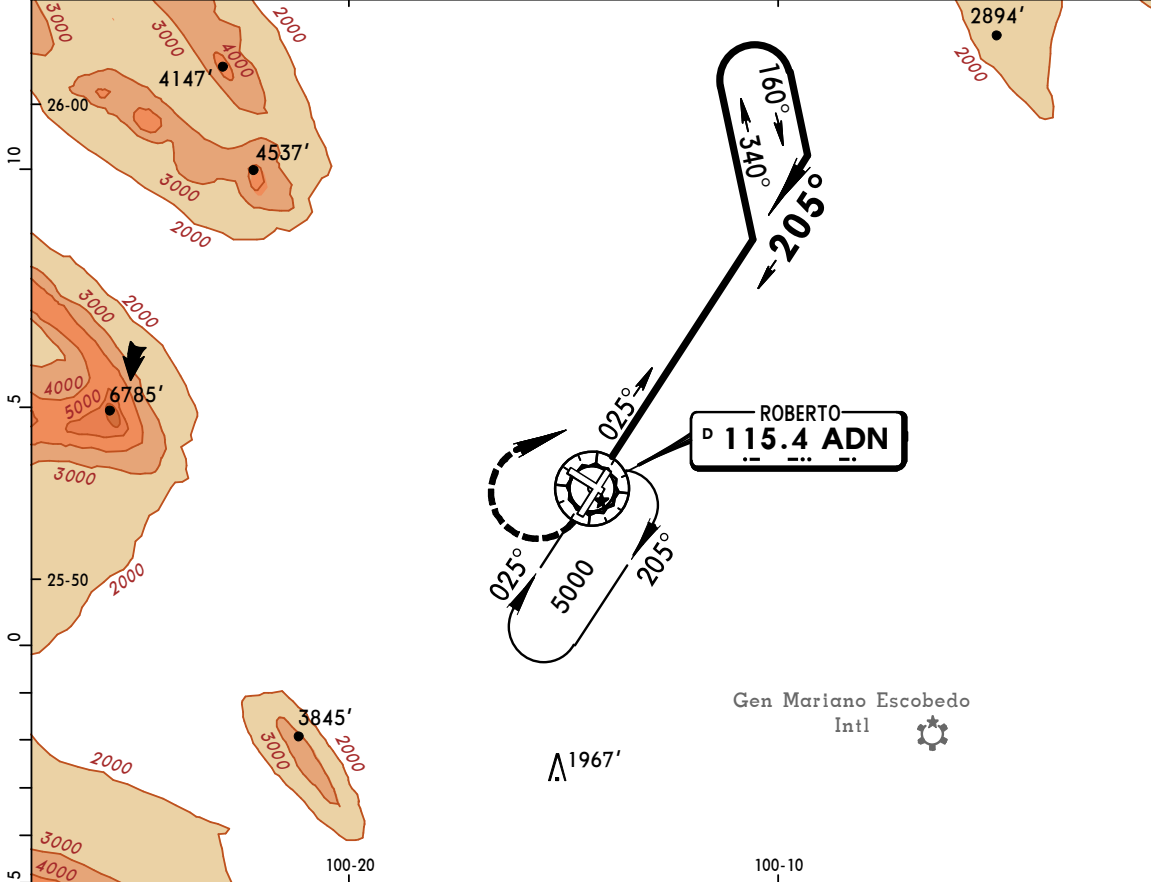
STRAIGHT-IN LANDING RWY 20			CIRCLE-TO-LAND		
MDA(H) 2040' (564')			MDA(H)		
A	1	Max Kts 90	2100'(624')-1		
B	1 1/2	120	2100'(624')-1 3/4		
C	1 3/4	140	2100'(624')-2		
D		165			

CHANGES: Procedure bearings, FAF, MAP.

© JEPPESEN, 2001, 2011. ALL RIGHTS RESERVED.

Print Date: 26 Jun 2013

*ATIS 127.55	MONTERREY Approach (R) 119.75 120.4		*DEL NORTE Tower 118.6	*Ground 122.0																							
VOR ADN 115.4	Final Apch Crs 205°	No FAF	MDA(H) 2040' (564')	Apt Elev 1476'																							
MISSED APCH: Climbing RIGHT turn to intercept ADN VOR R-025 outbound and proceed on the approach track to the minimum holding altitude.																											
Maximum outbound leg distance 7 NM.																											
<table border="1"> <thead> <tr> <th colspan="8">MAX TIME TO TURN</th> </tr> <tr> <th>Gnd speed-Kts</th> <th>80</th> <th>100</th> <th>120</th> <th>140</th> <th>160</th> <th>180</th> <th>200</th> </tr> </thead> <tbody> <tr> <td>7 NM to turn</td> <td>5:15</td> <td>4:12</td> <td>3:30</td> <td>3:00</td> <td>2:38</td> <td>2:20</td> <td>2:06</td> </tr> </tbody> </table>					MAX TIME TO TURN								Gnd speed-Kts	80	100	120	140	160	180	200	7 NM to turn	5:15	4:12	3:30	3:00	2:38	2:20
MAX TIME TO TURN																											
Gnd speed-Kts	80	100	120	140	160	180	200																				
7 NM to turn	5:15	4:12	3:30	3:00	2:38	2:20	2:06																				
Alt Set: MB (IN on req) Apt Elev: 53 MB Trans level: FL 195 Trans alt: 18500'				MSA ADN VOR																							



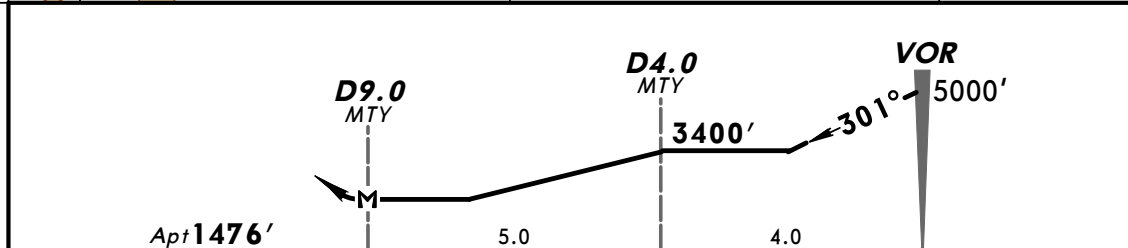
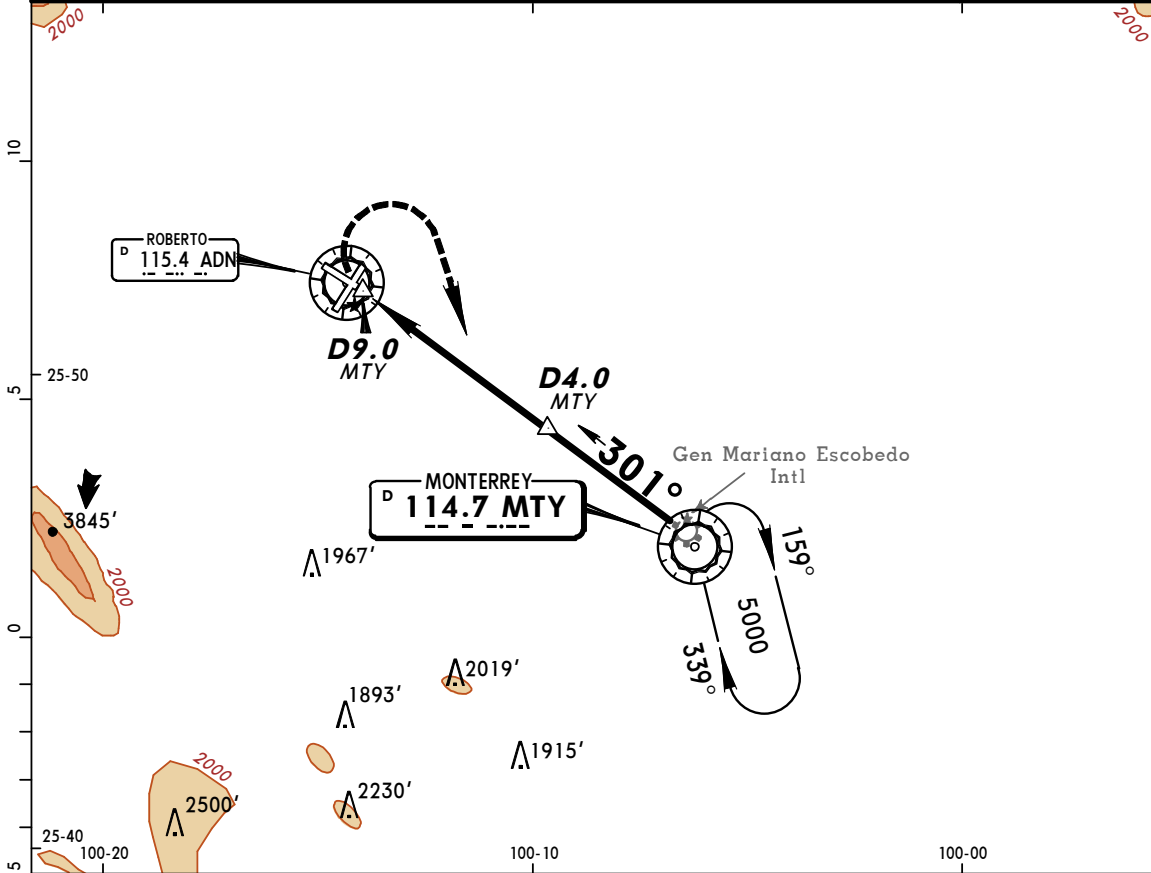
MAP at VOR				PAPI-L	RT	ADN 115.4 R-025
------------	--	--	--	--------	----	-------------------------------

STRAIGHT-IN LANDING RWY 20		CIRCLE-TO-LAND	
MDA(H) 2040' (564')		Max Kts	MDA(H)
A		90	
B	1	120	2040' (564')-1
C	1½	140	2040' (564')-1½
D	1¾	165	2040' (564')-2

CHANGES: Missed approach restriction.

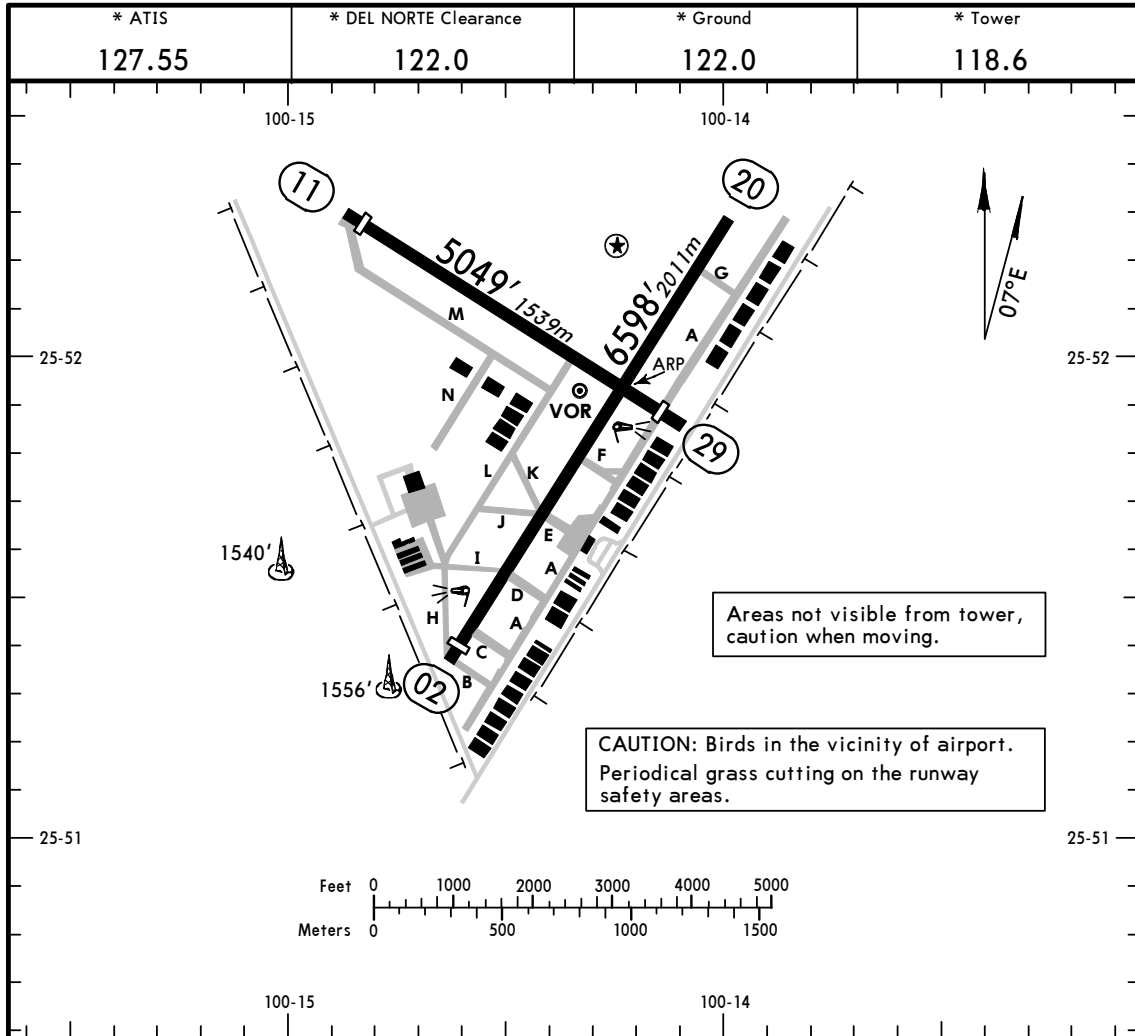
© JEPPESEN, 2001, 2012. ALL RIGHTS RESERVED.

*ATIS 127.55		MONTERREY Approach (R) 119.75 120.4		*DEL NORTE Tower 118.6	*Ground 122.0
VOR MTY 114.7	Final Apch Crs 301°	Minimum Alt D4.0 MTY 3400' (1924')	MDA(H) (CONDITIONAL) 1980' (504')	Apt Elev 1476'	
MISSED APCH: Climbing RIGHT turn to intercept MTY VOR R-301 inbound and return to MTY VOR to the minimum holding altitude. In case of DME failure, max outbound leg distance 9 NM.					
Alt Set: MB (IN on req)		Apt Elev: 53 MB	Trans level: FL 195	Trans alt: 18500'	



Gnd speed-Kts	70	90	100	120	140	160		MTY 114.7 R-301
MAP at D9.0 MTY								
VOR to MAP 9.0	7:43	6:00	5:24	4:30	3:51	3:23		

STRAIGHT-IN LANDING RWY 29			CIRCLE-TO-LAND	
MDA(H) 1980' (504')			MDA(H)	
DAY			NIGHT	Max Kts
A	1		NA	90
B	1			120
C	1½			140
D	NOT APPLICABLE		D	NOT APPLICABLE



Areas not visible from tower, caution when moving.

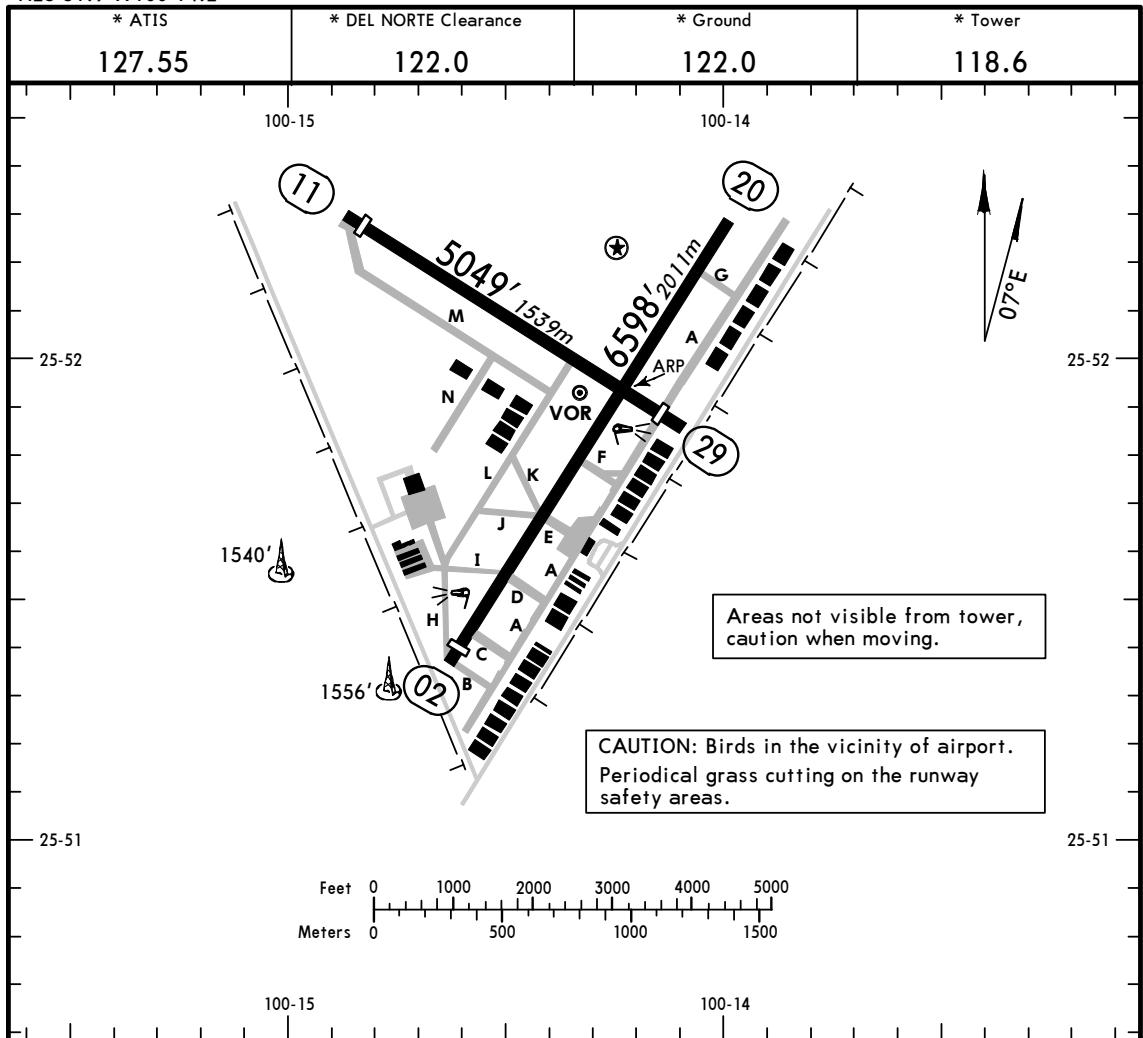
CAUTION: Birds in the vicinity of airport. Periodical grass cutting on the runway safety areas.

ADDITIONAL RUNWAY INFORMATION

RWY		USABLE LENGTHS			WIDTH
		LANDING BEYOND		TAKE-OFF	
		Threshold	Glide Slope		
02	MIRL PAPI-L (angle 3.0°)	6362' 1939m			148' 45m
20	MIRL PAPI-L (angle 3.2°)		5709' 1740m	6362' 1939m	
11	PAPI-R (angle 3.0°)	4787' 1459m		4715' 1437m	148' 45m
29		4715' 1437m		4787' 1459m	

TAKE-OFF

	Rwys 02, 20	Rwys 11, 29	
		DAY	
1 & 2 Eng	300-1	VFR	
3 & 4 Eng	200-1/2		



Areas not visible from tower, caution when moving.

CAUTION: Birds in the vicinity of airport. Periodical grass cutting on the runway safety areas.

ADDITIONAL RUNWAY INFORMATION

RWY		USABLE LENGTHS			WIDTH
		LANDING BEYOND		TAKE-OFF	
		Threshold	Glide Slope		
02	MIRL PAPI-L (angle 3.0°)	6362' 1939m			148' 45m
20	MIRL PAPI-L (angle 3.2°)		5709' 1740m	6362' 1939m	
11	PAPI-L (angle 3.0°)	4787' 1459m		4715' 1437m	148' 45m
29		4715' 1437m		4787' 1459m	

TAKE-OFF

	Rwys 02, 20	Rwys 11, 29
		DAY
1 & 2 Eng	300-1	VFR
3 & 4 Eng	200-1/2	

